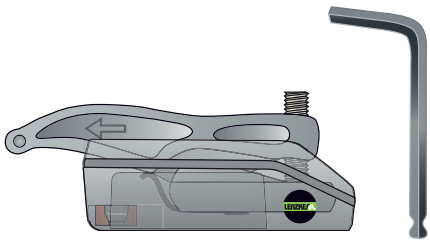


# Multi-Quick MQ 106 User Manual

## Content:



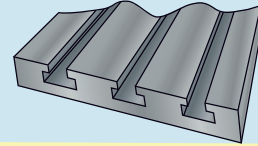
+

or

Set 1: for T-slots



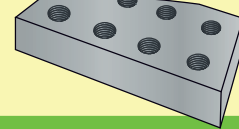
Machine Table



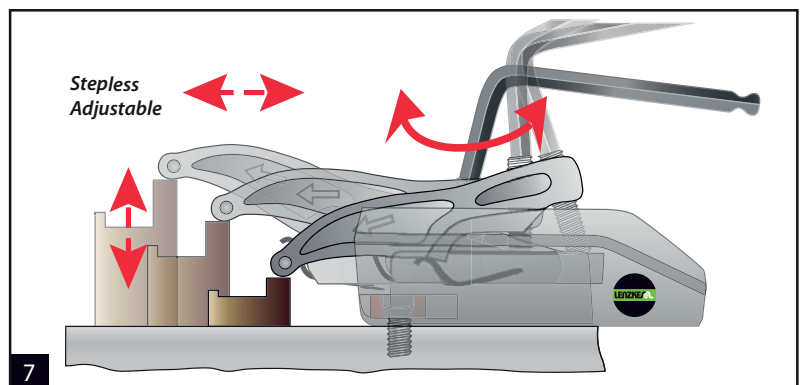
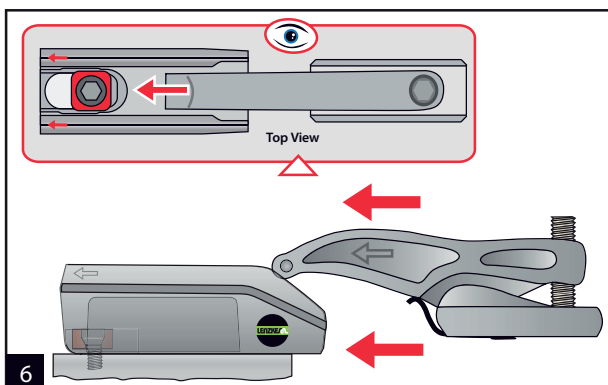
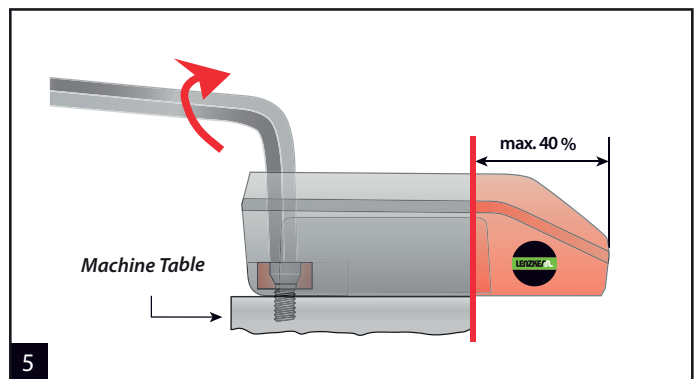
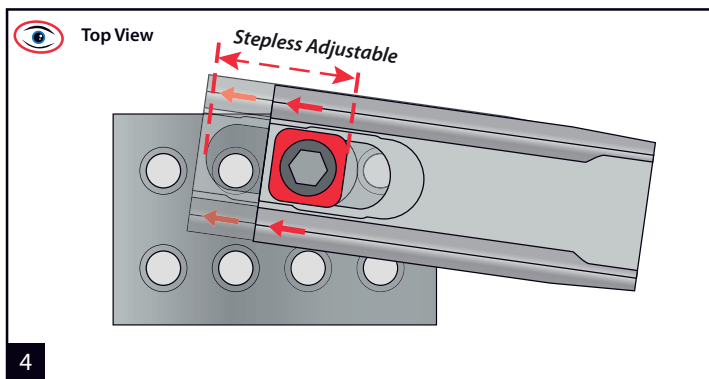
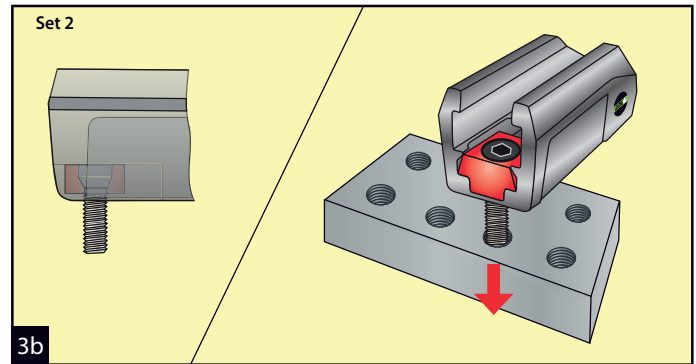
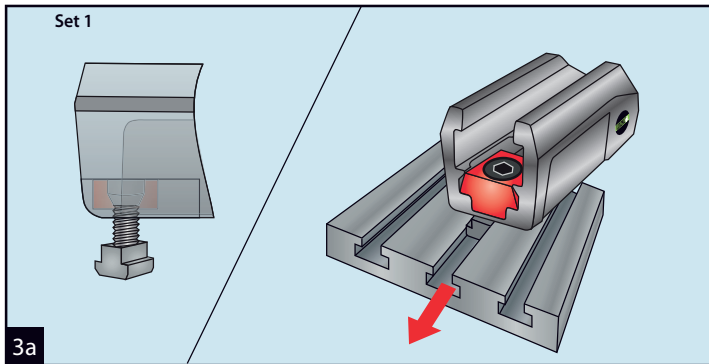
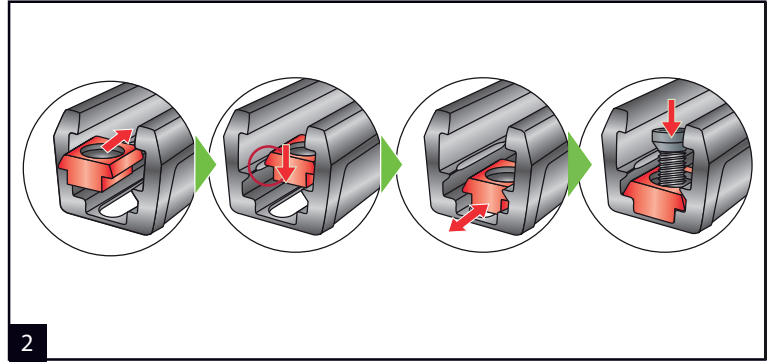
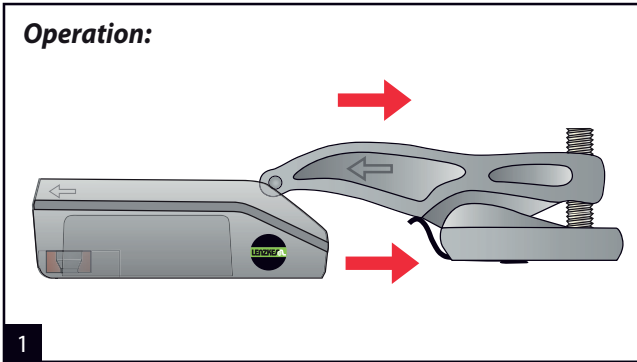
Set 2: for Tapped Holes



Machine Table

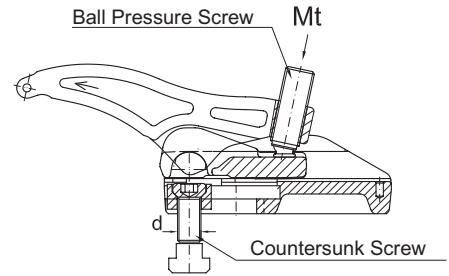


## Operation:



# Technical Data for mechanical Clamps

## Multi-Quick MQ 106



### Imperial

Numbers are based on average clamping heights · Recommended Torques (friction = 0.14)

			MQ 106		
Item	Countersunk Screw (d)		Torque Countersunk Screw	Torque Ball Pressure Screw	Holding Force max. F <sub>Z</sub>
	inch	metric	ft-lbs	ft-lbs	lbs
Series 8	1/4	M06	22	-	-
	5/16	M08	26	-	-
	3/8	M10	26	-	-
	1/2	M12	30	-	-
...-13	3/8	M10	30	59	7,100
...-13	1/2	M12	52	74	7,100
...-17	-	M14	74	89	9,600
...-17	5/8	M16	111	111	9,600
...-21	-	M18	118	118	11,200
...-21	3/4	M20	148	148	11,200
...-25	7/8	M22	162	162	13,400
...-25/26	1	M24	207	221	13,400
...-31/32/37	1 1/4	M30	207	221	13,400

### Metric

Numbers are based on average clamping heights · Recommended Torques (friction = 0.14)

			MQ 106		
Item	Countersunk Screw	Torque Countersunk Screw	Torque Ball Pressure Screw	Holding Force max. F <sub>Z</sub>	
	d	Mt Nm	Mt Nm	kN	
Series 8	M06	30	-	-	
	M08	35	-	-	
	M10	35	-	-	
	M12	40	-	-	
...-13	M10	40	80	32	
...-13	M12	70	100	32	
...-17	M14	100	120	43	
...-17	M16	150	150	43	
...-21	M18	160	160	50	
...-21	M20	200	200	50	
...-25	M22	220	220	60	
...-25/26	M24	280	300	60	
...-31/32/37	M30	280	300	60	

We reserve the rights to make technical changes